



## **Scholarship Search Engine**

### **Implementation (.NET)**

November 1, 2006

The information contained in this document is privileged, confidential and protected from disclosure. This document is not to be reproduced or shared without written or verbal consent of NextStudent, Inc.

## Table of Contents

Files, File Structures, File Descriptions .....	3
Implementation Instructions .....	4 - 5
See Examples .....	6

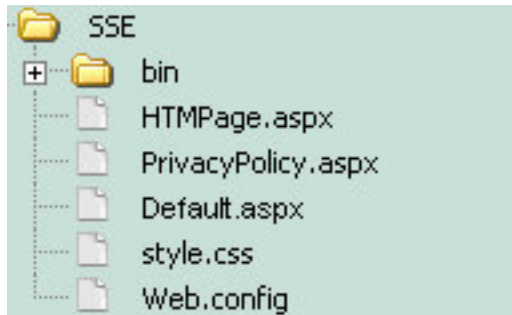
The information contained in this document is privileged, confidential and protected from disclosure. This document is not to be reproduced or shared without written or verbal consent of NextStudent, Inc.

## Files

All files can be downloaded from

<http://www.nextstudent.com/webmaster/scholarship-search-engine.asp> in a zip file format.

### File Structure




### File Descriptions


- ❑ **HTMPPage.aspx**  
Retrieves all .htm pages, for example, "AdvancedTips.htm and TermsAndConditions.htm".
- ❑ **PrivacyPolicy.aspx**
- ❑ **Default.aspx**  
The Primary page of the Scholarship Search Engine. Modify this page as needed to parallel the site's design.
- ❑ **style.css**  
Controls the style of **HTMPPage.aspx**, **PrivacyPolicy.aspx**, and **Default.aspx**
- ❑ **[ bin ] { DO NOT MODIFY }**  
Contains all binaries to push and pull data from the Scholarship Search Engine Database
- ❑ **Web.config { DO NOT MODIFY }**


## Implementation

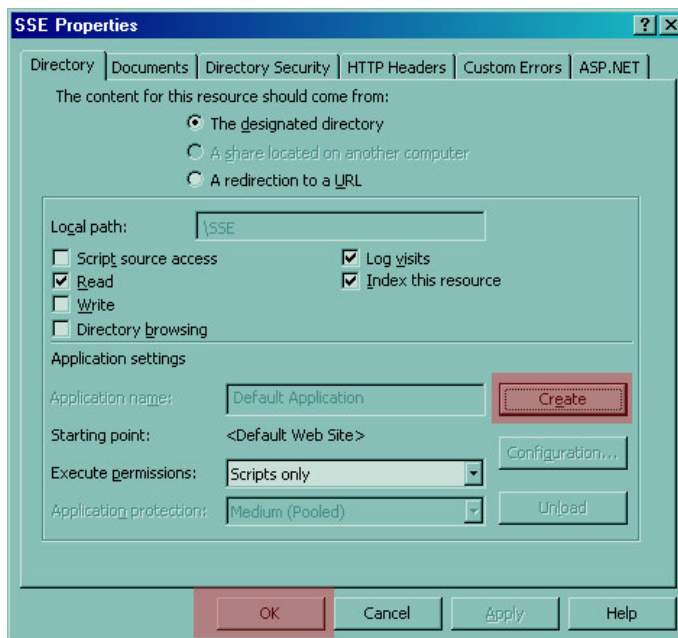
1. Create a new directory

EXAMPLE:  SSE

2. Copy and Paste the files into the new directory

EXAMPLE: 

3. Set the directory as a .NET application (*This step will vary depending on site hosting*)
  - a. Open IIS ( Internet Information Server )
  - b. Right Click the  SSE directory > properties
  - c. From the properties window select the Directory Tab if not already selected. Click Create > OK



- d. Open a browser and browse to the new path to verify it works.  
EXAMPLE: <http://www.mysite.com/sse>

The information contained in this document is privileged, confidential and protected from disclosure. This document is not to be reproduced or shared without written or verbal consent of NextStudent, Inc.

#### 4. Edit **Default.aspx** to parallel the site's design

**{ DO NOT MOVE OR MODIFY LINE 1 }**

```
<%@ Page language="c#" Codebehind="SSE.aspx.cs" AutoEventWireup="false" Inherits="SSE.SSE"
EnableViewStateMac="false" %>
```

Wrap the site template around LINE 2

```
<asp:Literal id="litHtml" runat="server" />
```

**EXAMPLE:**

```
<table width="650" border="0" align="center" cellpadding="0" cellspacing="0">
  <tr><td><h1>Student Tools</h1></td></tr>
  <tr><td><br><p><asp:Literal id="litHtml" runat="server" /></p><br><br></td></tr>
</table>
```

#### 5. Edit **style.css** with the appropriate values for the font and color schemes

```
a:active
{
  text-decoration: underline;
  color: #000000;
}

body,td
{
  font-family:Verdana,Arial, Helvetica, sans-serif;
  font-size: 12px;
}

p
{
  font-family:Verdana,Arial, Helvetica, sans-serif;
```

## See examples

<http://www.nextstudent.com/schools/sse>